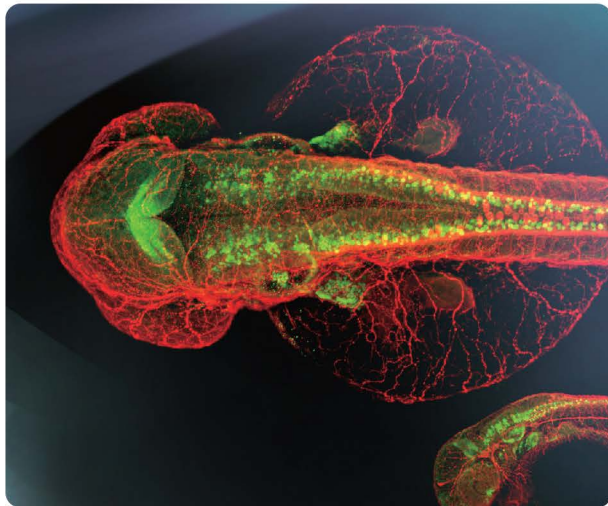


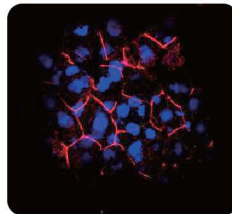
# The Leader in Zebrafish-Validated Antibodies

[www.genetex.com](http://www.genetex.com)

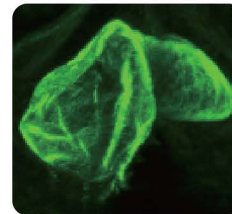
- Your Expertise
- Our Antibodies
- Accelerated Discovery



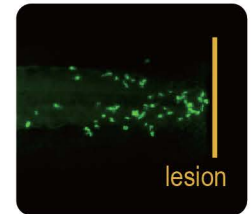
Pax2a antibody (GTX128127)



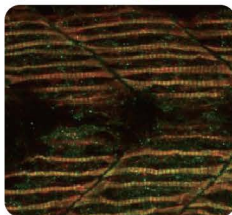
Cdh1 antibody (GTX125890)



Myl7 antibody (GTX128346)



Mpx antibody (GTX128379)



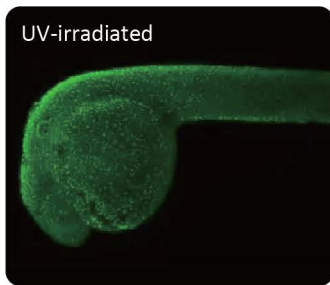
Tncn1a+b antibody (GTX127369)



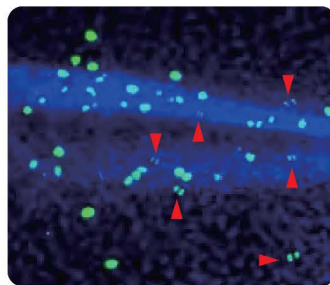
Sox10 antibody (GTX128374)



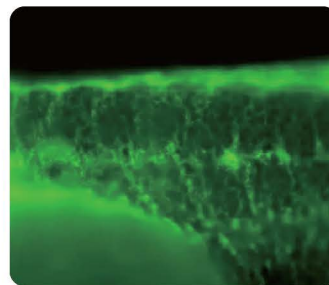
## Recombinant Antibodies for Zebrafish Research



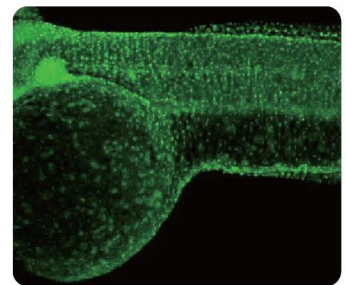
Histone H2A.XS139ph (phospho Ser139) antibody [HL1689] (GTX637288)



Histone H3S10ph (phospho Ser10) antibody [HL1752] (GTX637402)



SDHA antibody [HL1117] (GTX636335)



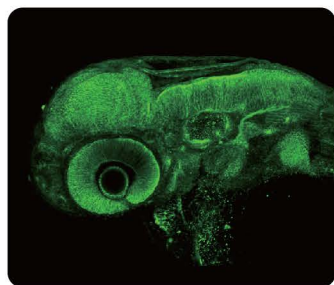
RPB2 antibody [HL1042] (GTX635976)

Cat. No.	Product Name	Clonality	Reactivity	Application
GTX637675	beta Actin antibody [HL1926]	Rec Rb mAb	Hu,Ms,Rat,Zfsh,Dm,Cat,Dog	WB, ICC/IF, IHC-P
GTX636986	DNA polymerase beta antibody [HL1512]	Rec Rb mAb	Hu,Ms,Rat,Zfsh	WB, ICC/IF, IHC-P
GTX637408	EIF6 antibody [HL1758]	Rec Rb mAb	Hu,Ms,Rat,Zfsh	WB, IHC-P
GTX636487	GAD65 + GAD67 antibody [HL1181]	Rec Rb mAb	Hu,Ms,Rat,Zfsh,Cat,Dog	WB, ICC/IF, IHC-P
GTX637966	GAPDH antibody [HL2062]	Rec Rb mAb	Hu,Ms,Rat,Zfsh,Cat,Dog	WB, ICC/IF
GTX635477	GPX2 antibody [HL125]	Rec Rb mAb	Hu,Ms,Rat,Zfsh,Dog	WB, IHC-P
GTX637288	Histone H2A.XS139ph (phospho Ser139) antibody [HL1689]	Rec Rb mAb	Zfsh	IHC-Wm
GTX637402	Histone H3S10ph (phospho Ser10) antibody [HL1752]	Rec Rb mAb	Hu,Ms,Zfsh	WB, ICC/IF, IHC-P, IHC-Wm
GTX637005	NPEPPS antibody [HL1531]	Rec Rb mAb	Hu,Ms,Rat,Zfsh,Cat,Dog	WB, ICC/IF, IHC-P
GTX635841	p63 antibody [HL1027]	Rec Rb mAb	Hu,Ms,Zfsh	WB, ICC/IF, IHC-P
GTX637858	PCNA antibody [HL1965]	Rec Rb mAb	Hu,Ms,Rat,Zfsh,Cat,Dog	WB
GTX636799	PDE6D antibody [HL1359]	Rec Rb mAb	Hu,Ms,Rat,Zfsh,Cat,Dog	WB, IHC-P
GTX637427	PGK1 + PGK2 antibody [HL1775]	Rec Rb mAb	Hu,Ms,Rat,Zfsh	WB, IHC-P
GTX635981	RAB6A antibody [HL1047]	Rec Rb mAb	Hu,Ms,Rat,Zfsh	WB, ICC/IF, IHC-P
GTX635976	RPB2 antibody [HL1042]	Rec Rb mAb	Hu,Ms,Rat,Zfsh,Cat,Dog	WB, IHC-P, IHC-Wm
GTX636634	RRM2 antibody [HL1235]	Rec Rb mAb	Hu,Ms,Zfsh	WB, ICC/IF, IHC-P
GTX636335	SDHA antibody [HL1117]	Rec Rb mAb	Hu,Ms,Rat,Zfsh	WB, ICC/IF, IHC-P, IHC-Wm
GTX636957	SOD2 antibody [HL1483]	Rec Rb mAb	Hu,Zfsh	WB, IHC-P
GTX70255	TSG101 antibody [4A10]	Rec Ms mAb	Hu,Ms,Rat,Zfsh,Dog,Hm,Pig,Mk	WB, ICC/IF, IHC-P, FACS, IP, ELISA, EM, IHC, IHC (Free Floating)
GTX637622	Vinculin antibody [HL1873]	Rec Rb mAb	Hu,Ms,Rat,Zfsh,Cat,Dog	WB, IHC-P
GTX635821	VPS35 antibody [HL1017]	Rec Rb mAb	Hu,Ms,Rat,Zfsh,Cat,Dog	WB, ICC/IF, IHC-P, IP

## Antibodies for Zebrafish Research



Elavl3+4 antibody  
(GTX128365)



Cdh2 (N-cadherin) antibody  
(GTX125962)



Pax6a+b antibody  
(GTX128843)

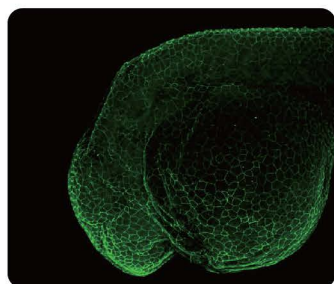


Gfap antibody  
(GTX128741)

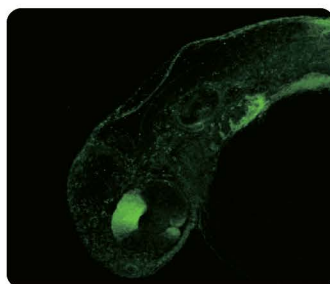
Cat. No.	Product Name	Clonality	Reactivity	Application
GTX124505	Acta2 antibody	Rb pAb	Hu,Zfsh	WB, IHC-P, IHC-Fr, IHC-Wm
GTX124302	Aldh1a2 antibody	Rb pAb	Zfsh	WB, IHC-Fr, IHC-Wm
GTX124303	alpha Tubulin antibody	Rb pAb	Zfsh	WB, IHC-P, IHC-Wm, IHC
GTX129736	Atp6v1a1 antibody	Rb pAb	Zfsh	WB, IHC-Wm
GTX130820	Atp6v1b2 antibody	Rb pAb	Zfsh	WB, IHC-Wm
GTX124388	Bactin1 antibody	Rb pAb	Zfsh	WB, IHC-P, IHC-Fr, IHC-Wm
GTX101435	beta Catenin antibody [N1N2-2], N-term	Rb pAb	Hu,Ms,Rat,Zfsh,Rb,Cat,Dog	WB, ICC/IF, IHC-P, IHC-Wm, FACS, IP, ChIP assay, IHC
GTX101279	beta Tubulin antibody	Rb pAb	Hu,Ms,Rat,Zfsh,Hm	WB, ICC/IF, IHC-P, IHC-Wm
GTX128348	Bmp4 antibody	Rb pAb	Zfsh	WB
GTX128200	Bmpr1ba+b antibody	Rb pAb	Zfsh	IHC-Wm
GTX125890	Cdh1 antibody	Rb pAb	Zfsh	IHC-Fr, IHC-Wm, IHC
GTX125962	Cdh2 antibody	Rb pAb	Zfsh	WB, IHC-P, IHC-Wm
GTX128752	Cdx4 antibody	Rb pAb	Zfsh	WB, IHC-Wm
GTX133063	Col1a1a antibody	Rb pAb	Zfsh	WB
GTX127988	Col2a1a antibody	Rb pAb	Zfsh	IHC-Fr, IHC-Wm
GTX124479	Cox4i1 antibody	Rb pAb	Zfsh	WB, IHC-P, IHC-Wm
GTX128677	Csf1r antibody	Rb pAb	Zfsh	WB, IHC-P, IHC-Fr
GTX124378	Ctnna antibody	Rb pAb	Zfsh	WB
GTX128324	Ctsl1b antibody	Rb pAb	Zfsh	WB, IHC-Wm
GTX113876	Cullin 4a antibody [N1C1]	Rb pAb	Hu,Zfsh	WB, IHC-Wm
GTX132244	Cxcr4b antibody	Rb pAb	Zfsh	WB
GTX128377	Cyp1a antibody	Rb pAb	Zfsh	WB
GTX110311	Cytokeratin 8 antibody	Rb pAb	Hu,Ms,Zfsh	WB, ICC/IF, IHC-P, IHC-Wm
GTX103878	Dishevelled 2 antibody [N2C2], Internal	Rb pAb	Hu,Ms,Zfsh	WB, IHC-P, IHC-Fr, IHC
GTX102509	Dishevelled 3 antibody [N1N2], N-term	Rb pAb	Hu,Ms,Zfsh	WB, ICC/IF, IHC-P, IHC-Fr, IP, IHC
GTX127330	Dnm2 antibody	Rb pAb	Zfsh	WB, ICC/IF, IHC-Wm
GTX100443	E-Cadherin antibody	Rb pAb	Hu,Ms,Rat,Zfsh,Dog	WB, ICC/IF, IHC-P, IHC-Wm, IP
GTX124538	Ef1a antibody	Rb pAb	Zfsh	WB, IHC-P
GTX124488	Eif2s1 antibody	Rb pAb	Zfsh	WB, IHC-P
GTX128365	Elavl3+4 antibody	Rb pAb	Hu,Zfsh	ICC/IF, IHC-Fr, IHC-Wm
GTX101803	ENO1 antibody [N3C3]	Rb pAb	Hu,Ms,Rat,Zfsh	WB, ICC/IF, IHC-P, IHC-Wm, Dot
GTX111709	Ezrin antibody [N2C2], Internal	Rb pAb	Hu,Ms,Rat,Zfsh	WB, ICC/IF, IHC-P, IHC-Wm
GTX128126	Fgf8a antibody	Rb pAb	Zfsh	IHC-Fr, IHC-Wm
GTX125996	Fmr1 antibody	Rb pAb	Zfsh	WB



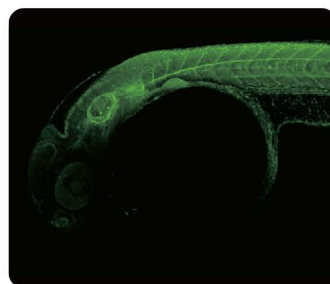
Isl1 antibody  
(GTX128201)



beta Catenin antibody [N1N2-2],  
N-term (GTX101435)

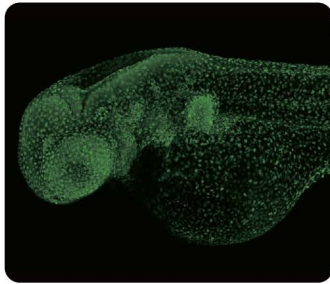


Aldh1a2 antibody  
(GTX124302)

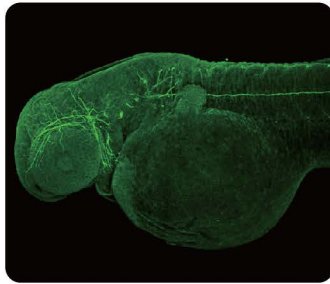


Col2a1a antibody  
(GTX127988)

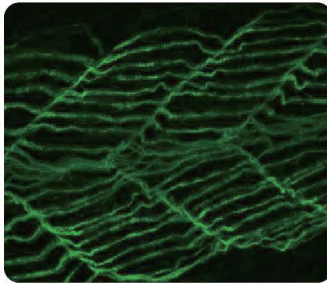




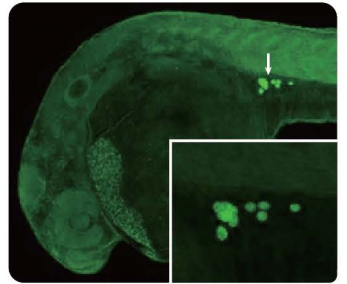
Pcna antibody  
(GTX124496)



Vim antibody  
(GTX133061)

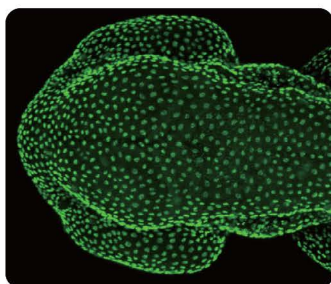


Dnm2 antibody  
(GTX127330)

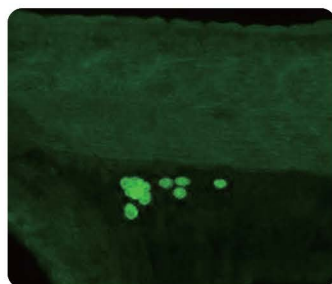


Vasa antibody  
(GTX128306)

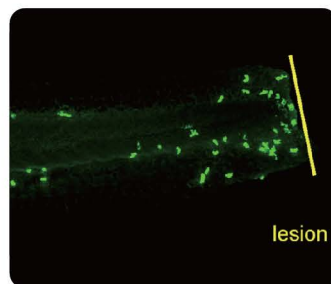
Cat. No.	Product Name	Clonality	Reactivity	Application
GTX125728	Gabra1 antibody	Rb pAb	Zfsh	WB, IHC-P
GTX124355	Gad1b antibody	Rb pAb	Zfsh	WB, IHC-P, IHC-Wm
GTX113286	gamma Tubulin antibody	Rb pAb	Hu, Ms, Rat, Zfsh	WB, ICC/IF, IHC-P, IHC-Wm, IP, IHC (Formalin), IHC
GTX124502	Gapdh antibody	Rb pAb	Hu, Ms, Rat, Zfsh, Dm, Cat, Dog, E. coli	WB, ICC/IF, IHC-P
GTX128333	Gata1a antibody	Rb pAb	Zfsh	WB, IHC-Wm
GTX128741	Gfap antibody	Rb pAb	Zfsh, Fish	WB, ICC/IF, IHC-Fr, IHC-Wm
GTX128280	Gli2a antibody	Rb pAb	Zfsh, Xenopus	WB, IHC-Wm
GTX128636	Hbae1 antibody	Rb pAb	Zfsh	WB, IHC-Wm
GTX131826	Hif1ab antibody	Rb pAb	Zfsh	WB
GTX127342	Histone H2A.XS139ph (phospho Ser139) antibody	Rb pAb	Hu, Zfsh	WB, ICC/IF, IHC-P, IHC-Fr, IHC-Wm, IHC
GTX124375	Hk2 antibody	Rb pAb	Zfsh	WB
GTX101277	HMGB1 antibody	Rb pAb	Hu, Ms, Rat, Zfsh, Pig	WB, ICC/IF, IHC-P, IHC-Wm, IHC, IHC (Free Floating)
GTX101852	hnRNP AB antibody	Rb pAb	Hu, Zfsh	WB, ICC/IF, IHC-P, IHC-Wm, IP, ChIP-seq
GTX101448	Hsp90 beta antibody	Rb pAb	Hu, Ms, Rat, Zfsh	WB, ICC/IF, IHC-P, IHC-Wm, IP, ELISA-Ag
GTX124320	Idh1 antibody	Rb pAb	Zfsh	WB
GTX101691	ILK antibody [N1C1]	Rb pAb	Hu, Ms, Rat, Zfsh	WB, IHC-P, IHC-Wm, IP, IHC
GTX128490	Ins antibody	Rb pAb	Zfsh	IHC-Wm
GTX128201	Isl1 antibody	Rb pAb	Zfsh	WB, IHC-Wm
GTX102807	Islet 1 antibody	Rb pAb	Hu, Ms, Rat, Zfsh	WB, ICC/IF, IHC-P, IHC-Fr, IHC-Wm
GTX113927	Jab1 antibody [N1C1]	Rb pAb	Hu, Ms, Zfsh	WB, ICC/IF, IHC-P, IHC-Wm
GTX124420	Lcp1 antibody	Rb pAb	Zfsh	IHC-P, IHC-Fr, IHC-Wm, IHC
GTX131406	Leptin b antibody	Rb pAb	Zfsh	WB
GTX132379	Lyz antibody	Rb pAb	Zfsh	WB, IHC-Wm
GTX128295	Mafba antibody	Rb pAb	Zfsh	IHC-Wm
GTX125115	Mapk3 antibody	Rb pAb	Zfsh	WB, IHC-P
GTX132692	Mfap4 antibody	Rb pAb	Zfsh	IHC-Wm
GTX128263	Mitfa antibody	Rb pAb	Zfsh, Carp	WB, IHC-Wm
GTX128379	Mpx antibody	Rb pAb	Zfsh, Atlantic salmon	IHC-P, IHC-Fr, IHC-Wm, IHC
GTX124771	Mtor antibody	Rb pAb	Zfsh	WB, IHC-P, IHC-Wm
GTX128816	Myl2 antibody	Rb pAb	Zfsh	WB, IHC-Fr, IHC-Wm, IHC
GTX128346	Myl7 antibody	Rb pAb	Zfsh, Japanese Medaka	WB, IHC-Fr, IHC-Wm
GTX132491	Nanog antibody	Rb pAb	Zfsh	WB
GTX121922	NFYB antibody	Rb pAb	Hu, Ms, Rat, Zfsh	WB, ICC/IF, IHC-P, IHC-Wm, IP, ChIP assay
GTX128357	Nkx2.5 antibody	Rb pAb	Zfsh	IHC-Wm



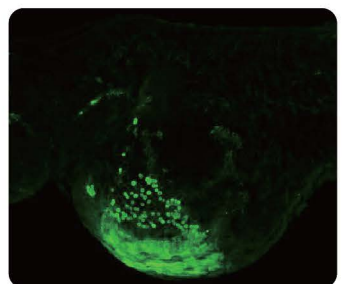
Tp63 antibody  
(GTX124660)



Vasa antibody  
(GTX128306)










































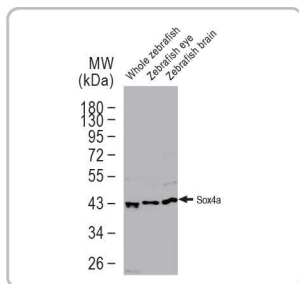
Lyz antibody  
(GTX132379)



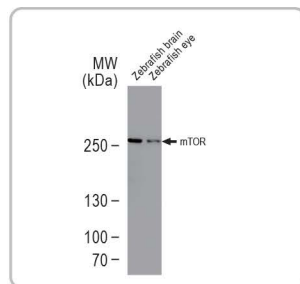
Hbae1 antibody  
(GTX128636)


## Antibodies for Zebrafish Research

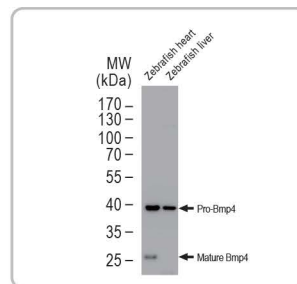
Cat. No.	Product Name	Clonality	Reactivity	Application
 GTX101706	nm23-H2 antibody	Rb pAb	Hu,Ms,Zfsh	WB, IHC-P
 GTX128127	Pax2a antibody	Rb pAb	Zfsh,Japanese Medaka	WB, IHC-Wm
 GTX128843	Pax6a+b antibody	Rb pAb	Zfsh	IHC-Wm
  GTX124496	Pcna antibody	Rb pAb	Zfsh,Japanese Medaka, Nothobranchius furzeri	WB, IHC-P, IHC-Fr, IHC-Wm, Immunostaining
 GTX124491	Phb antibody	Rb pAb	Zfsh,Teleost	WB, IHC-Wm
  GTX113802	Polycystin 2 antibody	Rb pAb	Hu,Zfsh	WB, IHC-P, IHC-Wm
 GTX128354	Prox1 antibody	Rb pAb	Zfsh	IHC-P, IHC-Fr, IHC-Wm
 GTX128266	PU.1/Spi1 antibody	Rb pAb	Zfsh	WB, IHC-Wm
  GTX104015	Pyruvate Dehydrogenase E1 alpha antibody	Rb pAb	Hu,Ms,Rat,Zfsh	WB, ICC/IF, IHC-P, IHC-Wm, IP
 GTX127328	Rab11a + Rab11b antibody	Rb pAb	Zfsh	WB, ICC/IF, IHC-Wm, IHC
   GTX100469	Rad51 antibody [N1C2]	Rb pAb	Hu,Ms,Rat,Zfsh	WB, ICC/IF, IHC-P, IP
  GTX115554	RbAp48 antibody [N1C2]	Rb pAb	Hu,Zfsh	WB, ICC/IF, IHC-P, IHC-Wm
   GTX117624	RNase H1 antibody [N2C3]	Rb pAb	Hu,Zfsh	WB, IHC-P
 GTX124464	Rpl3 antibody	Rb pAb	Zfsh	WB, IHC-P, IHC-Wm
 GTX124294	Sod2 antibody	Rb pAb	Zfsh	WB, IHC-P, IHC-Wm
 GTX124477	Sox2 antibody	Rb pAb	Zfsh,Japanese Medaka,Fish	WB, ICC/IF, IHC-P, IHC-Fr, IHC-Wm
  GTX132494	Sox3 antibody	Rb pAb	Zfsh	WB, IHC-Fr, IHC-Wm, ChIP assay
GTX132380	Sox32 antibody	Rb pAb	Zfsh	WB
GTX133062	Sox4a antibody	Rb pAb	Zfsh	WB
 GTX128370	Sox9a antibody	Rb pAb	Zfsh	WB, IHC-P, IHC-Wm
 GTX128374	Sox10 antibody	Rb pAb	Zfsh,Chk,Japanese Medaka	WB, IHC-P, IHC-Fr, IHC-Wm, IHC
 GTX125994	Tagln antibody	Rb pAb	Zfsh	WB, IHC-Wm
 GTX125869	Thbs4b antibody	Rb pAb	Zfsh	WB, IHC-Wm
GTX127369	Tnnc1a+b antibody	Rb pAb	Zfsh	IHC-Wm
 GTX124660	Tp63 antibody	Rb pAb	Zfsh,Fish	WB, IHC-P, IHC-Fr, IHC-Wm, ChIP assay, IHC
  GTX114851	Tropomyosin 4 antibody	Rb pAb	Hu,Ms,Rat,Zfsh	WB, IHC-P, IHC-Wm
 GTX124352	Tubg1 antibody	Rb pAb	Zfsh	WB, IHC-P, IHC-Fr, IHC-Wm, IHC
 GTX132130	Vamp2 antibody	Rb pAb	Zfsh	WB, IHC-Wm, IHC
 GTX128306	Vasa antibody	Rb pAb	Zfsh,Japanese Medaka,Fish	WB, ICC/IF, IHC-P, IHC-Wm, IHC
   GTX101089	VCP antibody	Rb pAb	Hu,Ms,Rat,Zfsh	WB, ICC/IF, IHC-P, IHC-Fr, IHC-Wm, IP
GTX133061	Vim antibody	Rb pAb	Zfsh	WB, IHC-Wm



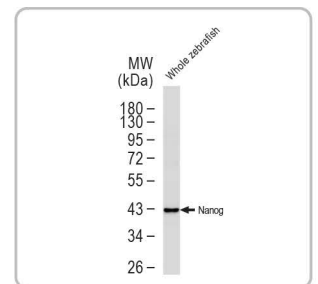
Sox4a antibody  
(GTX133062)



Mtor antibody  
(GTX124771) 



Bmp4 antibody  
(GTX128348)



Nanog antibody  
(GTX132491) 